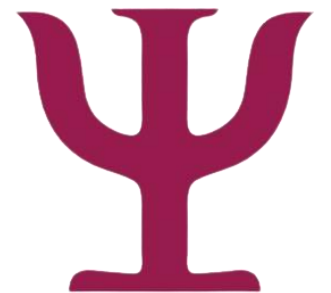


Sue Franklin

Principal Educational Psychologist

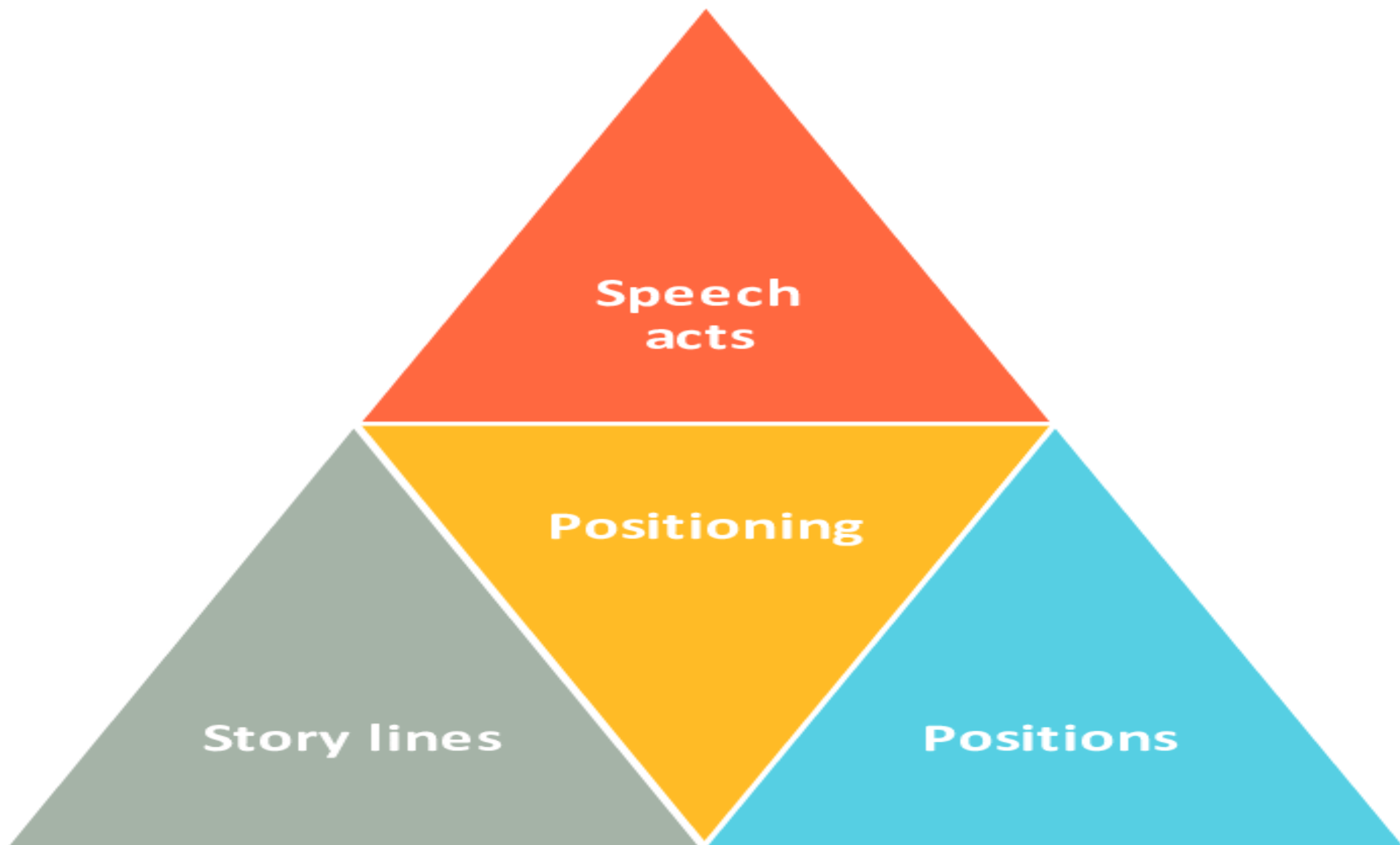
Brighton and Hove City Council



A hand is shown from the bottom, with the index finger pointing upwards towards a glowing yellow rectangular box. Inside the box, the word "Positioning" is written in a bold, dark blue font. The background is a blurred bokeh of blue and yellow lights.

Positioning













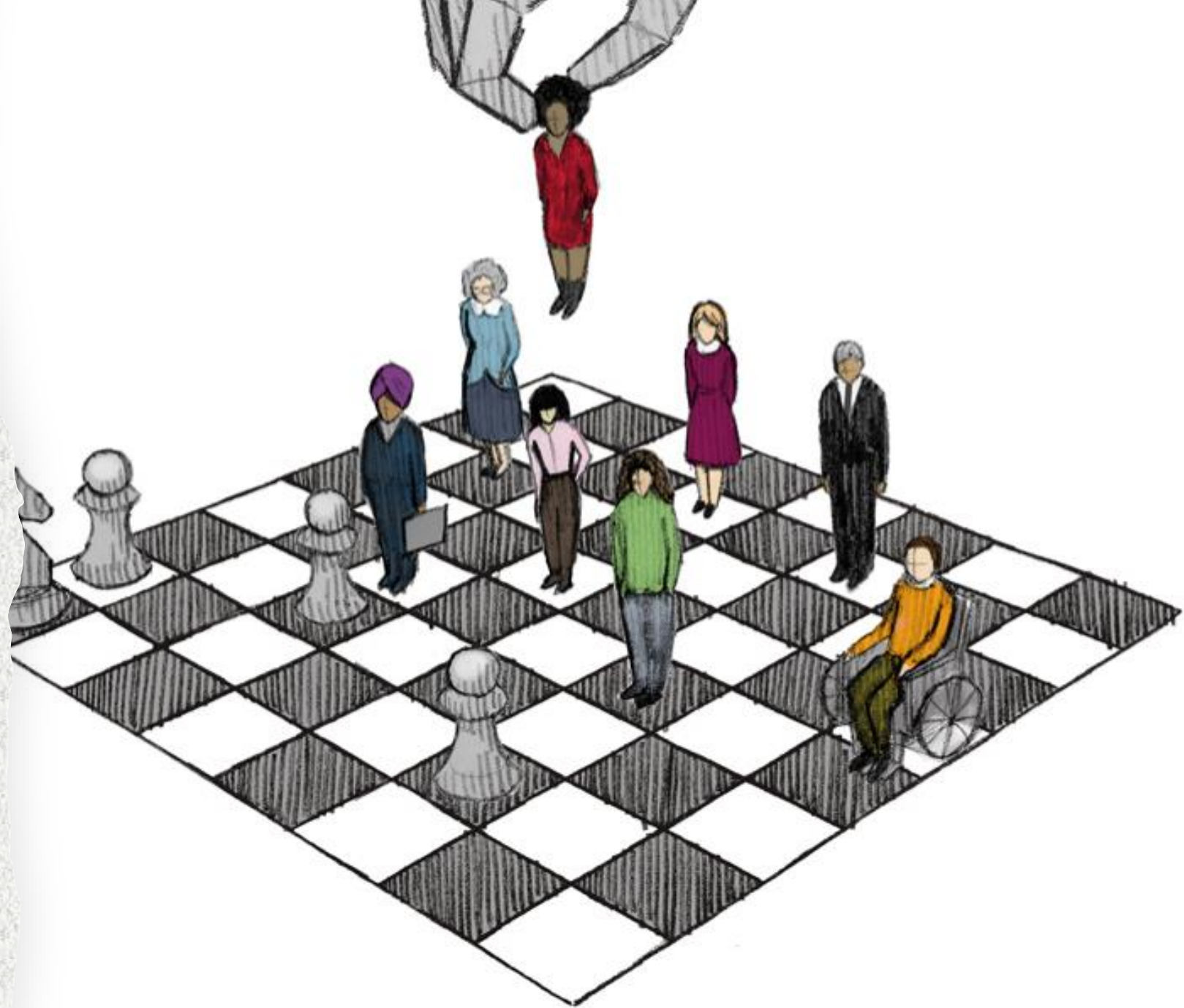
There's a cat stuck up a tree! We need an assessment by an EP and some strategies to get it down!

HEAD-TO-KNEE BACKWARD
AND BEND. GOT IT?



DOING GREAT!



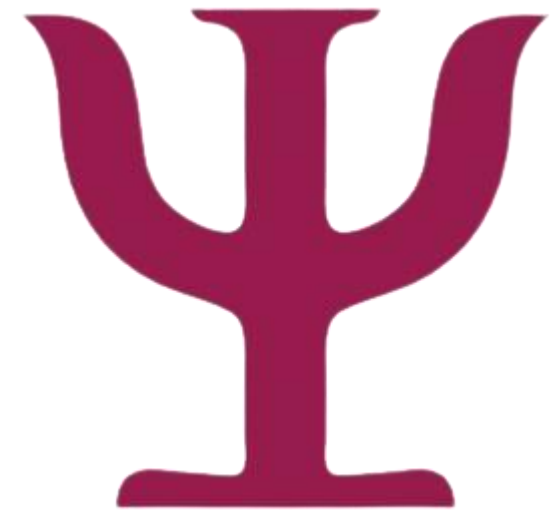




A hand in a grey suit sleeve points to a specific location on a complex, multi-colored transit map. The map features various colored lines (blue, orange, yellow, green, red, purple) representing different routes, with a dense network of connections. The background is dark, making the map and the hand stand out.

Using Positioning Theory to navigate PEP leadership

Sue Franklin
Principal Educational Psychologist and Head of
Brighton and Hove Inclusion Support Services

A large, stylized Greek letter Psi (Ψ) in a dark red color, positioned in the lower right quadrant of the image. The background is split diagonally from the bottom-left to the top-right, with a dark red upper-left section and a white lower-right section. Two thin white lines run parallel to the diagonal boundary.